

# The ALIA Professional Pathways project

## Background

### Vision

A diverse, valued and supported Library and Information Sector (LIS) workforce with the skills, knowledge and ethics needed to deliver quality library and information services that anticipate and meet the needs of the population.

As the national professional body for the library and information services sector, ALIA is committed to supporting our Members' professional journeys, and ensuring that their professionalism is recognised and valued.

Professional Pathways seeks to achieve this vision by:

- Revising and clarifying the LIS professional skills, knowledge and ethical practice framework.
- Introducing new entry points at different levels.
- Increasing pathways within the profession.
- Working with education providers to ensure strong education offerings.
- Supporting professionalism and lifelong learning.
- Promoting the value of LIS professionals.

## The Professional Pathways team

### Professional Pathways Board

Comprising 16 representatives from across the library sector, the Board provides strategic oversight and leadership to ensure the successful development and implementation of Professional Pathways.



**Vicki Edmunds**  
ALIA President,  
Chair of the  
Board



**Kirsten Thorpe**  
Aboriginal  
and Torres  
Strait Islander  
Representative



**Kylie Poulton**  
Australian  
Government  
Library and  
Information  
Network



**Sandra Ryan**  
ALIA Schools



**Beatriz Aroche**  
ALIA VET



**Viv Barton**  
Australian  
Public Library  
Alliance



**Robyn Murfet**  
Australian  
Public Library  
Alliance



**Philip Kent**  
Council of  
Australian  
University  
Librarians



**Chelsea Harper**  
Council of  
Australian  
University  
Librarians



**Diane Velasquez**  
Higher  
Education  
Educators



**Ann Ritchie**  
Health  
Libraries  
Australia



**Sara Altmann**  
New  
Generation  
Advisory  
Committee



**Vicki McDonald (SLQ)**  
National and  
State Libraries  
Australia



**Geoff Stempel (SLSA)**  
National and  
State Libraries  
Australia



**Caitlin Wallace**  
Students  
and New  
Graduates  
Group



**Julie Barkman**  
VET  
Educators

### Consultation group

More than 600 people have contributed throughout the project so far.

### ALIA team

**Trish Hepworth** – ALIA Director of Policy and Education

**Dr Phoebe Weston-Evans** – Research Assistant

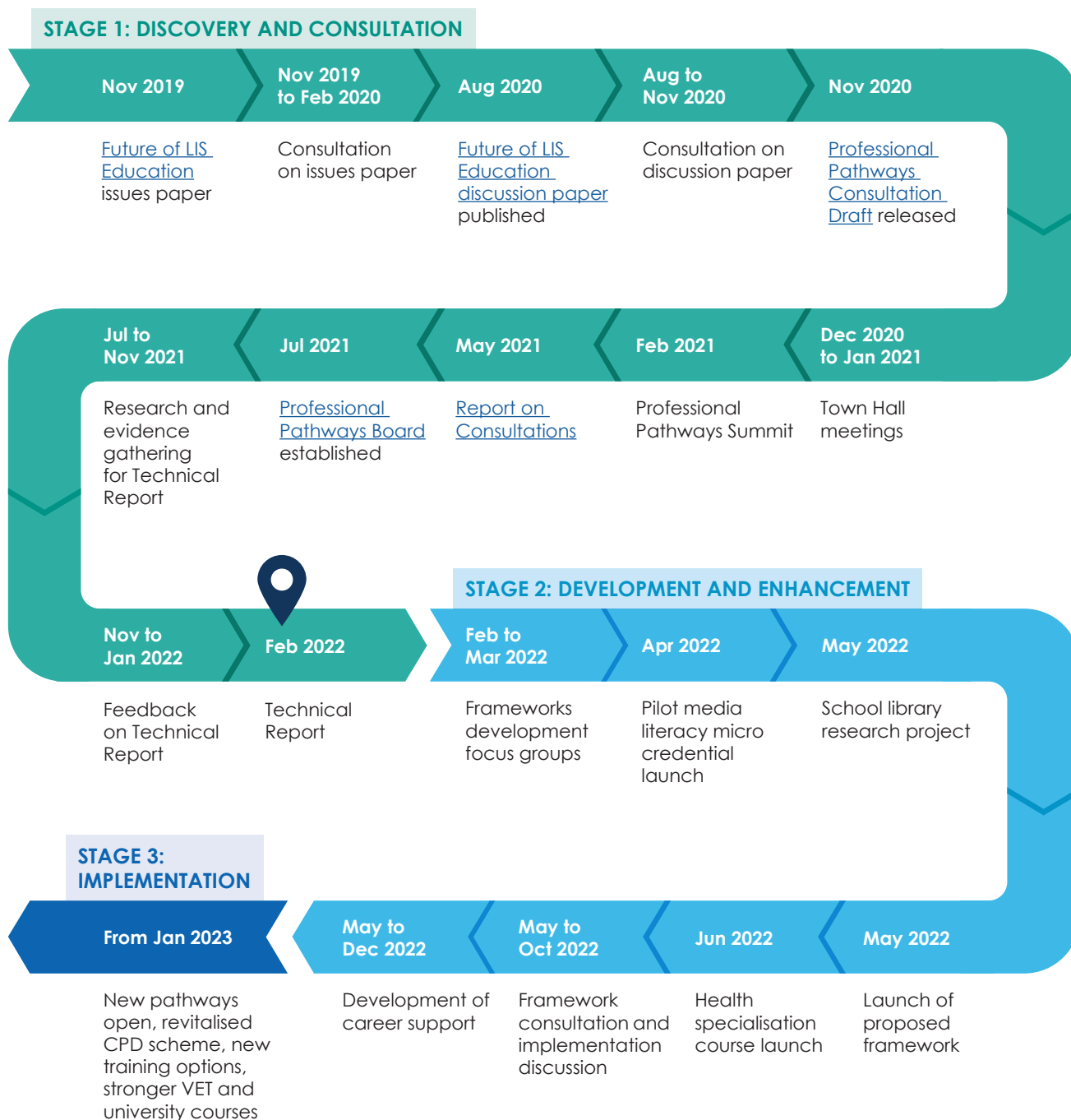
**Dr Gillian Hallam** (external consultant) – Technical Report and consultation

**Dr Lyn Hay** (external consultant) – School library consultant and research

**Rebecca Simone** – ALIA Marketing and Communications Manager

# Where are we now and where are we going?

The Professional Pathways project was announced in 2019. The following timeline lists the activity to date and future milestones.



## Find out more

For more information about this project or to get involved, email [education@alia.org.au](mailto:education@alia.org.au)